

Multivariate Data & Tables and Graphs



CS 7450 - Information Visualization
Aug. 24, 2015
John Stasko

Agenda



- Data and its characteristics
- Tables and graphs
- Design principles

Data



- Data is taken from and/or representing some phenomena from the world
- Data models something of interest to us

Fall 2015

CS 7450

3

Data Sets



- Data comes in many different forms
- Typically, not in the way you want them
- What is available to me (in the raw)?

Fall 2015

CS 7450

4

Example



- Cars
 - make
 - model
 - year
 - miles per gallon
 - cost
 - number of cylinders
 - weights
 - ...

Example



- Web pages

Data Models



- Often characterize data through three components
 - Objects
 - Items of interest
(students, courses, terms, ...)
 - Attributes
 - Characteristics or properties of data
(name, age, GPA, number, date, ...)
 - Relations
 - How two or more objects relate
(student takes course, course during term, ...)

Fall 2015

CS 7450

7

Data Tables



- We take raw data and transform it into a model/form that is more workable
- Main idea:
 - Individual items are called *cases*
 - Cases have *variables* (attributes)

 - Relational: Relations between cases (not our main focus today)

Fall 2015

CS 7450

8

Data Table Format



	Case ₁	Case ₂	Case ₃	...
Variable ₁	Value ₁₁	Value ₂₁	Value ₃₁	
Variable ₂	Value ₁₂	Value ₂₂	Value ₃₂	
Variable ₃	Value ₁₃	Value ₂₃	Value ₃₃	
...				

Think of as a function
 $f(\text{case}_i) = \langle \text{Val}_{1i}, \text{Val}_{2i}, \dots \rangle$

Example



	Mary	Jim	Sally	Mitch	...
SSN	145	294	563	823	
Age	23	17	47	29	
Hair	brown	black	blonde	red	
GPA	2.9	3.7	3.4	2.1	
...					

People in class

Or



	P1	P2	P3	P4	...
Name	Mary	Jim	Sally	Mitch	
SSN	145	294	563	823	
Age	23	17	47	29	
Hair	brown	black	blonde	red	
GPA	2.9	3.7	3.4	2.1	
...					

People in class

Example



Baseball statistics

	A	B	C	D	E	F	G	H	I	J	K
1	Name	At Bats	Hits	Home Run	Runs	Rbi	Walks	Years In M	Career At	Career Hit	Car
2	STRING	INT	INT	INT	INT	INT	INT	INT	INT	INT	INT
3	Andy Allanson	293	66	1	30	29	14	1	293	66	
4	Alan Ashby	315	81	7	24	38	39	14	3449	835	
5	Alvin Davis	479	130	18	66	72	76	3	1624	457	
6	Andre Dawson	496	141	20	65	78	37	11	5628	1575	
7	Andres Galarraga	321	87	10	39	42	30	2	396	101	
8	Alfredo Griffin	594	169	4	74	51	35	11	4408	1133	
9	Al Newman	185	37	1	23	8	21	2	214	42	
10	Argenis Salaza	298	73	0	24	24	7	3	509	108	
11	Andres Thomas	323	81	6	26	32	8	2	341	86	
12	Andre Thornton	401	92	17	49	66	65	13	5206	1332	
13	Alan Trammell	574	159	21	107	75	59	10	4631	1300	
14	Alex Trevino	202	53	4	31	26	27	9	1876	467	
15	Andy Van Slyke	418	113	13	48	61	47	4	1512	392	
16	Alan Wiggins	239	60	0	30	11	22	6	1941	510	
17	Bill Almon	196	43	7	29	27	30	13	3231	825	
18	Billy Beane	183	39	3	20	15	11	3	201	42	
19	Buddy Bell	568	158	20	89	75	73	15	8068	2273	
20	Buddy Biancalani	190	46	2	24	8	15	5	479	102	
21	Bruce Bochte	407	104	6	57	43	65	12	5233	1478	

Variable Types



- Three main types of variables
 - N-Nominal (equal or not equal to other values)
Example: gender
 - O-Ordinal (obeys $<$ relation, ordered set)
Example: fr,so,jr,sr
 - Q-Quantitative (can do math on them)
Example: age

Fall 2015

CS 7450

13

Alternate Characterization



- Two types of data
 - Quantitative
Relationships between values:
 - Ranking
 - Ratio
 - Correlation
 - Categorical
How attributes relate to each other:
 - Nominal
 - Ordinal
 - Interval
 - Hierarchical

From S. Few

Fall 2015

CS 7450

14

Metadata



- Descriptive information about the data
 - Might be something as simple as the type of a variable, or could be more complex
 - For times when the table itself just isn't enough
 - Example: if variable1 is "I", then variable3 can only be 3, 7 or 16

Data Cleaning



- Data may be missing/corrupted
 - Remove?
 - Modify?
- You may want to adjust values
 - Use inverse
 - Map nominal to ordinal/quantitative
 - Normalize values
 - Scale between 0 and 1

How Many Variables?



- Data sets of dimensions 1, 2, 3 are common
- Number of variables per class
 - 1 - Univariate data
 - 2 - Bivariate data
 - 3 - Trivariate data
 - >3 - Hypervariate data

Representation



- What are two main ways of presenting multivariate data sets?
 - Directly (textually) → Tables
 - Symbolically (pictures) → Graphs
- When use which?

Strengths?

S. Few
Show Me the Numbers



- Use tables when
 - The document will be used to look up individual values
 - The document will be used to compare individual values
 - Precise values are required
 - The quantitative info to be communicated involves more than one unit of measure
- Use graphs when
 - The message is contained in the shape of the values
 - The document will be used to reveal relationships among values

Fall 2015

CS 7450

19

Effective Table Design



- See *Show Me the Numbers*
- Proper and effective use of layout, typography, shading, etc. can go a long way
- (Tables may be underused)

Fall 2015

CS 7450

20

Example



Fall 2015

CS 7450

21

Example



Fall 2015

CS 7450

22

Basic Symbolic Displays



- Graphs ←
- Charts
- Maps
- Diagrams

From:
S. Kosslyn, "Understanding charts
and graphs", *Applied Cognitive
Psychology*, 1989.

Fall 2015

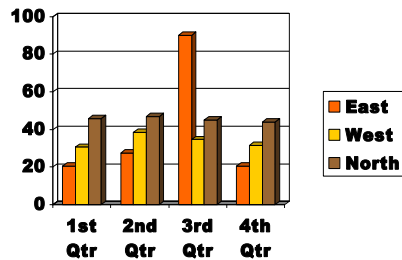
CS 7450

23

1. Graph



Showing the relationships between variables' values in a data table



Fall 2015

CS 7450

24

Properties



- Graph
 - Visual display that illustrates one or more relationships among entities
 - Shorthand way to present information
 - Allows a trend, pattern or comparison to be easily comprehended

Fall 2015

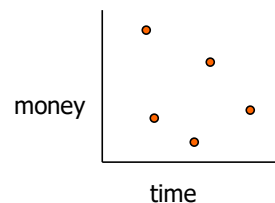
CS 7450

25

Issues



- Critical to remain task-centric
 - Why do you need a graph?
 - What questions are being answered?
 - What data is needed to answer those questions?
 - Who is the audience?



Fall 2015

CS 7450

26

Graph Components



- Framework
 - Measurement types, scale
- Content
 - Marks, lines, points
- Labels
 - Title, axes, ticks

Fall 2015

CS 7450

27

Quick Aside



- Other symbolic displays
 - Chart
 - Map
 - Diagram

Fall 2015

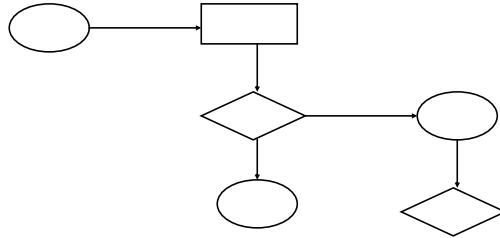
CS 7450

28

2. Chart



- Structure is important, relates entities to each other
- Primarily uses lines, enclosure, position to link entities



Examples: flowchart, family tree, org chart, ...

Fall 2015

CS 7450

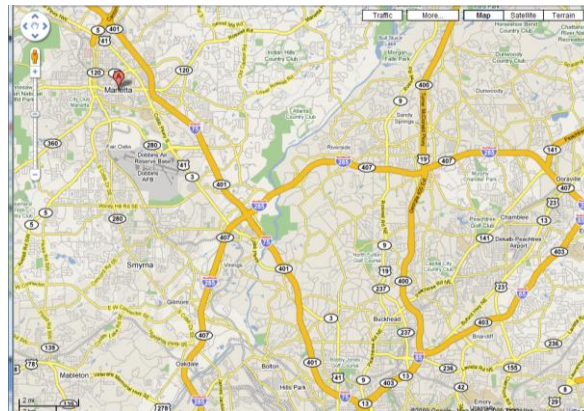
29

3. Map



Representation of
spatial relations

Locations identified
by labels



Fall 2015

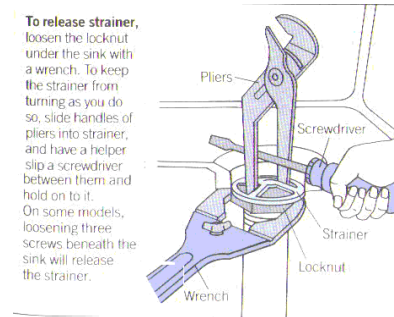
CS 7450

30

4. Diagram



- Schematic picture of object or entity
- Parts are symbolic



Examples: figures, steps in a manual, illustrations,...

Fall 2015

CS 7450

31

Some History



- Which is older, map or graph?
- Maps from about 2300 BC
- Graphs from 1600's
 - Rene Descartes
 - William Playfair, late 1700's

Aside

Fall 2015

CS 7450

32

Details



- What are the constituent pieces of these four symbolic displays?
- What are the building blocks?

Visual Structures



- Composed of
 - Spatial substrate
 - Marks
 - Graphical properties of marks

Space



- Visually dominant
- Often put axes on space to assist
- Use techniques of composition, alignment, folding, recursion, overloading to
 - 1) increase use of space
 - 2) do data encodings

Fall 2015

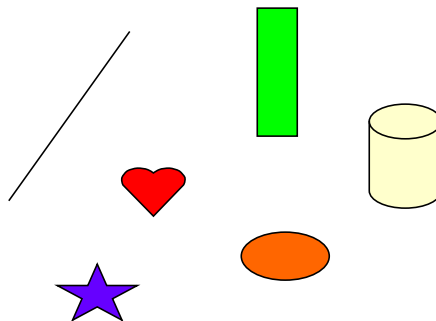
CS 7450

35

Marks



- Things that occur in space
 - Points
 - Lines
 - Areas
 - Volumes



Fall 2015

CS 7450

36

Graphical Properties



- Size, shape, color, orientation...

	Spatial properties	Object properties
Expressing extent	Position Size	Grayscale
Differentiating marks	Orientation	Color Shape Texture

Fall 2015

CS 7450

37

Back to Data



- What were the different types of data sets?
- Number of variables per class
 - 1 - Univariate data
 - 2 - Bivariate data
 - 3 - Trivariate data
 - >3 - Hypervariate data

Fall 2015

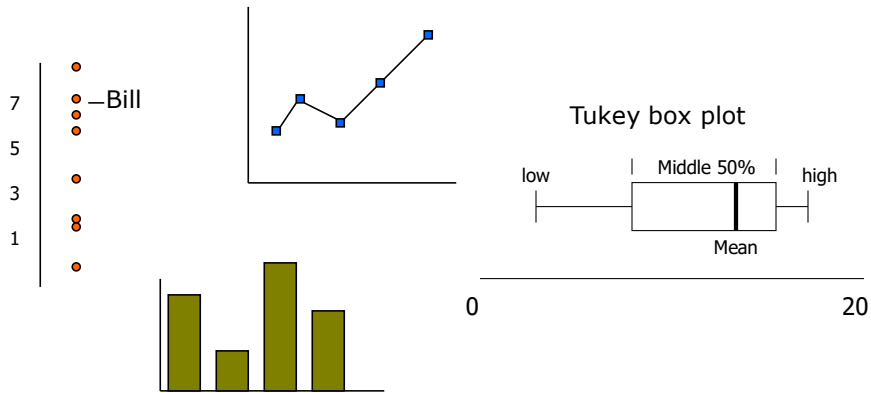
CS 7450

38

Univariate Data



- Representations



Fall 2015

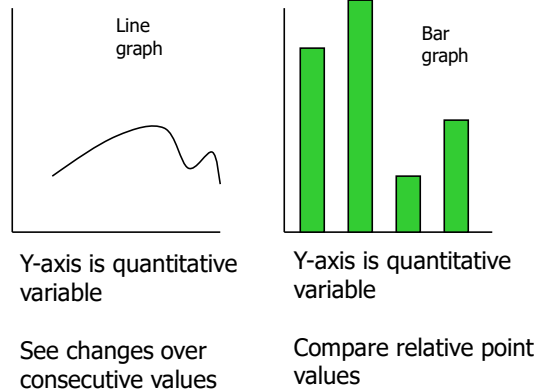
CS 7450

39

What Goes Where?



- In univariate representations, we often think of the data case as being shown along one dimension, and the value in another



Fall 2015

CS 7450

40

Alternative View



- We may think of graph as representing independent (data case) and dependent (value) variables
- Guideline:
 - Independent vs. dependent variables
Put independent on x-axis
See resultant dependent variables along y-axis

Fall 2015

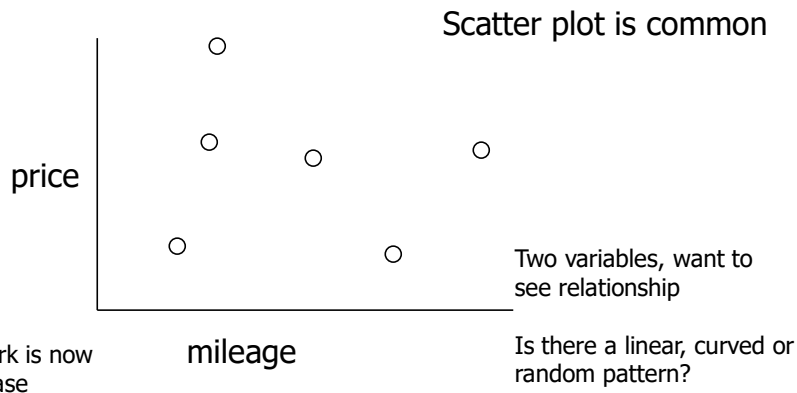
CS 7450

41

Bivariate Data



- Representations



Fall 2015

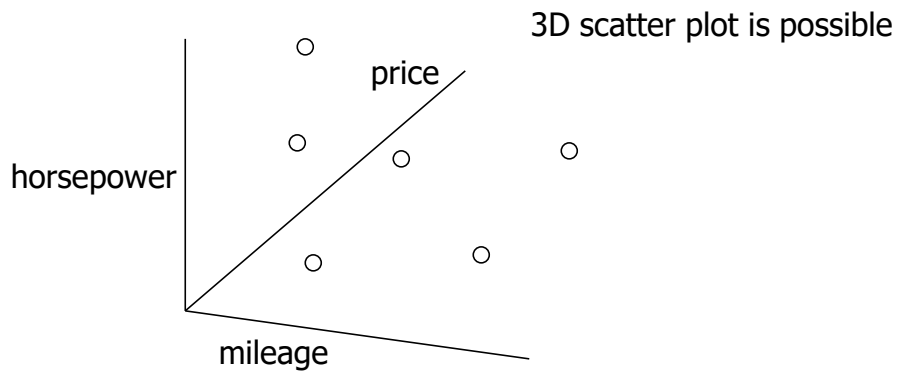
CS 7450

42

Trivariate Data



- Representations

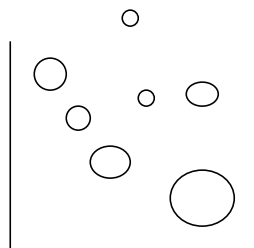


Fall 2015

CS 7450

43

Alternative Representation



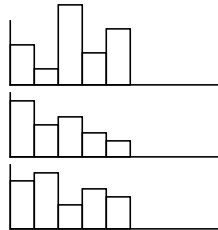
Still use 2D but have
mark property
represent third
variable

Fall 2015

CS 7450

44

Alternative Representation



Represent each variable
in its own explicit way

Fall 2015

CS 7450

45

Hypervariate Data



- Ahhh, the tough one
- Number of well-known visualization techniques exist for data sets of 1-3 dimensions
 - line graphs, bar graphs, scatter plots
 - We see a 3-D world (4-D with time)
- What about data sets with more than 3 variables?
 - Often the interesting, challenging ones

Fall 2015

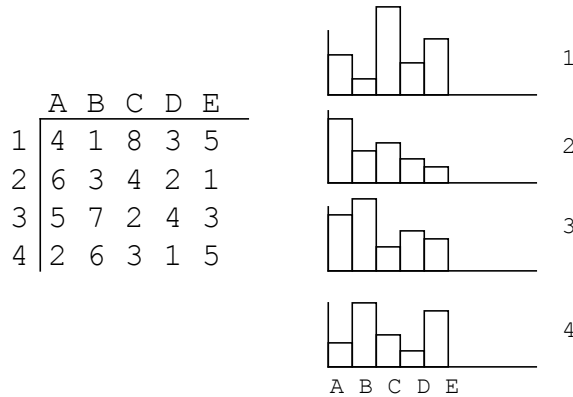
CS 7450

46

Multiple Views



Give each variable its own display



Fall 2015

CS 7450

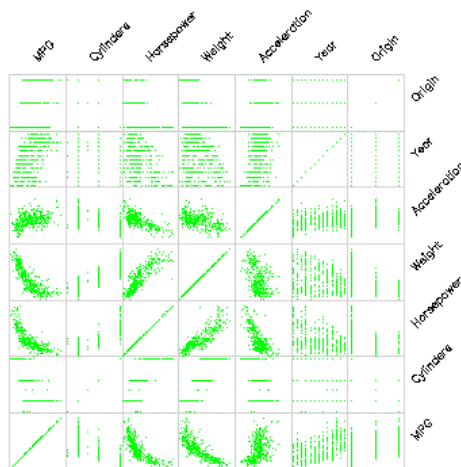
47

Scatterplot Matrix



Represent each possible pair of variables in their own 2-D scatterplot

Useful for what?
Misses what?



Fall 2015

CS 7450

48

Design Challenge



Data about dogs

Variety	N
Group	N
Size	O
Smartness	N
Popularity	Q
Ranking	Q

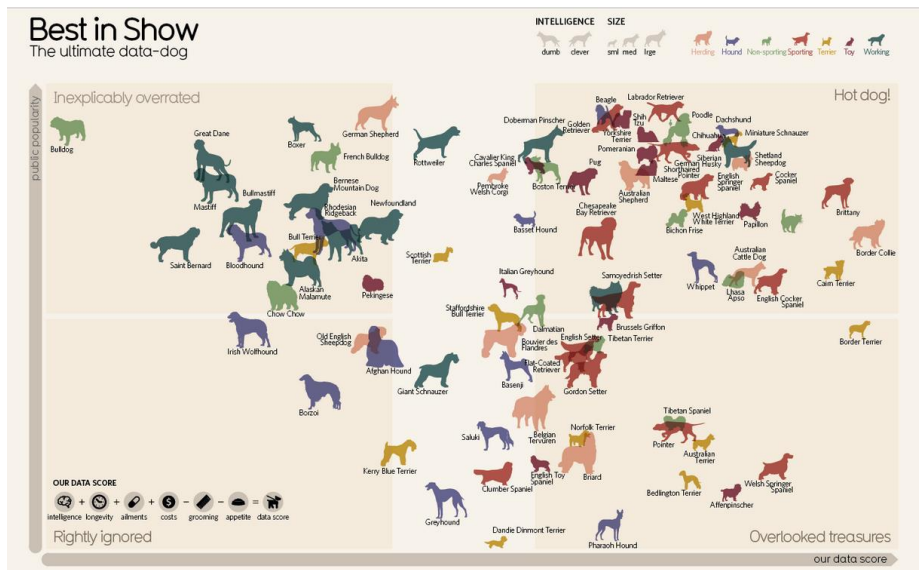
Design a representation

Fall 2015

CS 7450

49

http://www.slate.com/blogs/wild_things/2014/11/12/big_data_dog_graph_popularity_of_dog_breeds_mapped_against_their_overall.html



Fall 2015

CS 7450

50

More to Come...



- Subsequent day will explore other general techniques for handling hypervariate data

Back to Graphs



- Design guidance
 - Few provides many helpful principles to design effective graphs

Few's Selection & Design Process



- Determine your message and identify your data
- Determine if a table, or graph, or both is needed to communicate your message
- Determine the best means to encode the values
- Determine where to display each variable
- Determine the best design for the remaining objects
 - Determine the range of the quantitative scale
 - If a legend is required, determine where to place it
 - Determine the best location for the quantitative scale
 - Determine if grid lines are required
 - Determine what descriptive text is needed
- Determine if particular data should be featured and how

S Few
"Effectively Communicating Numbers"
http://www.perceptualedge.com/articles/Whitepapers/Communicating_Numbers.pdf

Some
examples...

Fall 2015

CS 7450

53

Points, Lines, Bars, Boxes



- Points
 - Useful in scatterplots for 2-values
 - Can replace bars when scale doesn't start at 0
- Lines
 - Connect values in a series
 - Show changes, trends, patterns
 - Not for a set of nominal or ordinal values
- Bars
 - Emphasizes individual values
 - Good for comparing individual values
- Boxes
 - Shows a distribution of values

Fall 2015

CS 7450

54

Vertical vs. Horizontal Bars



- Horizontal can be good if long labels or many items

Fall 2015

CS 7450

55

Multiple Bars



- Can be used to encode another variable

Fall 2015

CS 7450

56

Multiple Graphs



- Can distribute a variable across graphs too

Sometimes called a trellis display

Fall 2015

CS 7450

57



Examples

Fall 2015

CS 7450

58

Before



You want to present quantitative sales performance data for the 4 regions of your company for the four quarters of the year

Fall 2015

CS 7450

59

After?



Fall 2015

CS 7450

60

Before



Fall 2015

CS 7450

61

After?



Fall 2015

CS 7450

62

Before



Fall 2015

CS 7450

63

After?



Fall 2015

CS 7450

64

Before



Fall 2015

CS 7450

65

After?

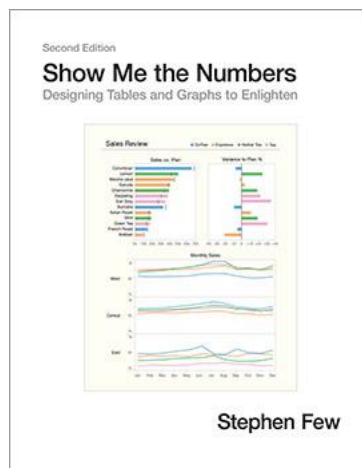


Fall 2015

CS 7450

66

Book Recommendation



Loaded with examples of how to redesign ineffective tables and graphs

Fall 2015

CS 7450

67

Advice



- Take DB & IR courses
 - Learn about query languages, relational data models, datacubes, data warehouses, ...

Fall 2015

CS 7450

68

Administratia



- Our second TA added, Iulian Radu
- Office hours being posted

Fall 2015

CS 7450

69

HW 1 Discussion



- What findings did you make?
- What was difficult?
- What help did you want?

Fall 2015

CS 7450

70

HW 2



- Table and graph design
- Given two (Excel) data sets, design a table and graph for the data, respectively
- Due next Monday

Fall 2015

CS 7450

71

Project



- Start thinking about topics
- Form teams

Fall 2015

CS 7450

72

Upcoming



- S. Few's Design Guidance
 - Reading:
Now You See It, chapters 5-12

- Multivariate Visual Representations 1
 - Reading:
Inselberg '97

Fall 2015

CS 7450

73

Sources Used



Few book
CMS book
Referenced articles
Marti Hearst SIMS 247 lectures
Kosslyn '89 article
A. Marcus, *Graphic Design for Electronic Documents
and User Interfaces*
W. Cleveland, *The Elements of Graphing Data*

Fall 2015

CS 7450

74